

YOUR PARTNER IN:



BUILDING ENGINEERING

- Building Design & Layout
- Code Analysis
- Structural Analysis & Design
- MEP Design
- LEED Principles Design
- Computer Modeling
- Historic Preservation



CIVIL ENGINEERING

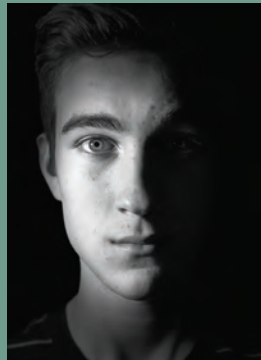
- Site Development
- Stormwater Management
- On-site Septic Design
- Drainage & Culvert Design
- Road Repair & Design
- Small Bridge Repair & Design
- Slope Stabilization & Retention
- Water Distribution Design
- NYSDOT Maintenance and Protection of Traffic



BRIAN R. DOAK, PE (NY, PA)
PRESIDENT AND CEO
B.S. CIVIL ENGINEERING



WILLIAM J. E. DOAK
BUSINESS LEAD AND
PROJECT MANAGER
B.S./M.S.
MECHANICAL ENGINEERING
PH. D. CANDIDATE,
MECHANICAL ENGINEERING



SILAS G. H. DOAK
CAD DESIGNER
WEB DEVELOPMENT
SOCIAL MEDIA



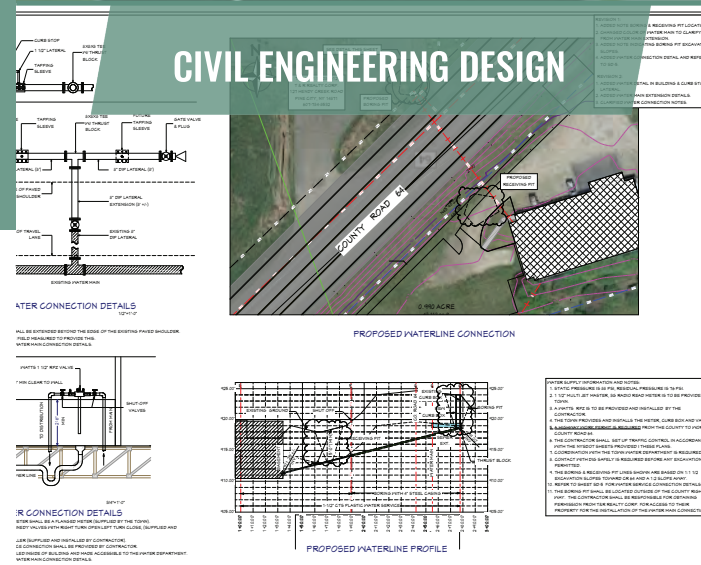
CONTACT US: 607.759.5792
BRIANDOAK@DOAKENGINEERINGDESIGNPC.COM
WWW.DOAKENGINEERINGDESIGNPC.COM



BUILDING ENGINEERING DESIGN

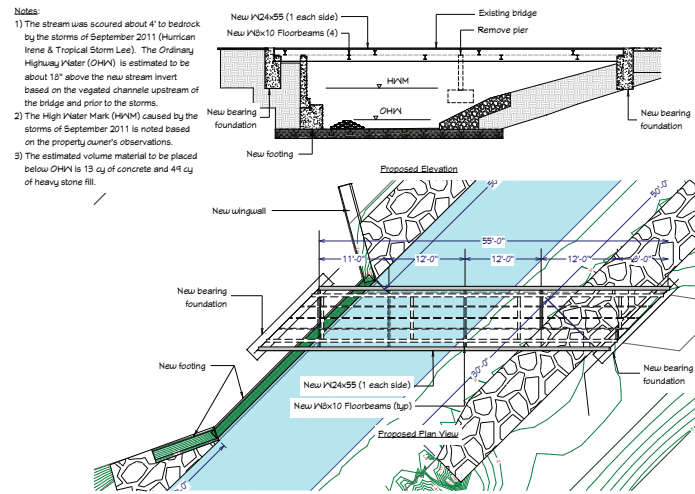


CIVIL ENGINEERING DESIGN



MORE THAN 35 YEARS BUILDING & CIVIL ENGINEERING EXPERIENCE

PROUDLY SERVING UPSTATE NEW YORK AND PENNSYLVANIA



BUILDING DESIGN



STRUCTURAL DESIGN
& ANALYSIS



MEP DESIGN



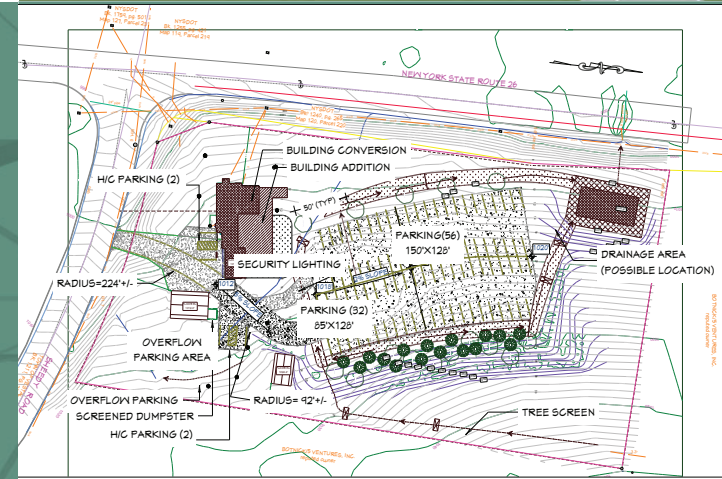
SITE DEVELOPMENT



SANITATION



STORMWATER
MANAGEMENT



NOTES:
1. SURVEY INFORMATION PROVIDED BY WILLIAMS & EDSALL, L.S., P.C.
2. ZONING IS COMMERCIAL DEVELOPMENT.
3. SECURITY LIGHTING TO BE PROVIDED 1-2 FC/5F. ESTIMATED TO BE APPROXIMATELY 10 FIXTURES AT 20'.

With over 30 years with NYSDOT, Mr. Doak has overseen many design projects from simple culvert replacements to full-scale Main Street reconstruction projects.

Doak Engineering Design, PC has also been the Engineer of Record for projects ranging from simple residential additions to complex multi-story, multi-building student housing renovation projects. With our wide background of the built-environment, and familiarity with the permitting and regulatory environment, Doak Engineering Design, PC is capable and desirous to lead you from the initial idea to the final reality through the design and construction process.

